



Guarnición diseñada para sellar vástagos y camisas de sistemas hidráulicos.
Están contruidos por dos zonas:

1. Elemento de retención. Supera el efecto de sellado de los arosellos convencionales, porque la deformación de sus labios producida por la presión genera un sello estanco sobre las paredes del vástago.
2. Base reforzada con tela y caucho sintético acrílo-nitrilo vulcanizada con el elemento de retención formando una sola pieza. Soportan temperaturas de 130°C y presiones de 250 kg/cm².

ESPAÑOL

Gaxeta desenvolvida para vedar hastes e camisas de sistemas hidráulicos.
São construídas por duas zonas:

1. Elemento de retenção: supera o efeito de vedação dos anéis convencionais porque a deformação de seus labios produzida pela pressão cria uma vedação estanque nas paredes da haste.
2. Base: reforçada com tela e borracha sintética acrílo-nitrilo vulcanizada com elemento de retenção formando uma só peça. Soportam temperaturas de até 130°C e pressões de até 250 kg/cm².

PORTUGUES

Designed to seal rods and pistons fram hydraulic system. They are built in two zones:

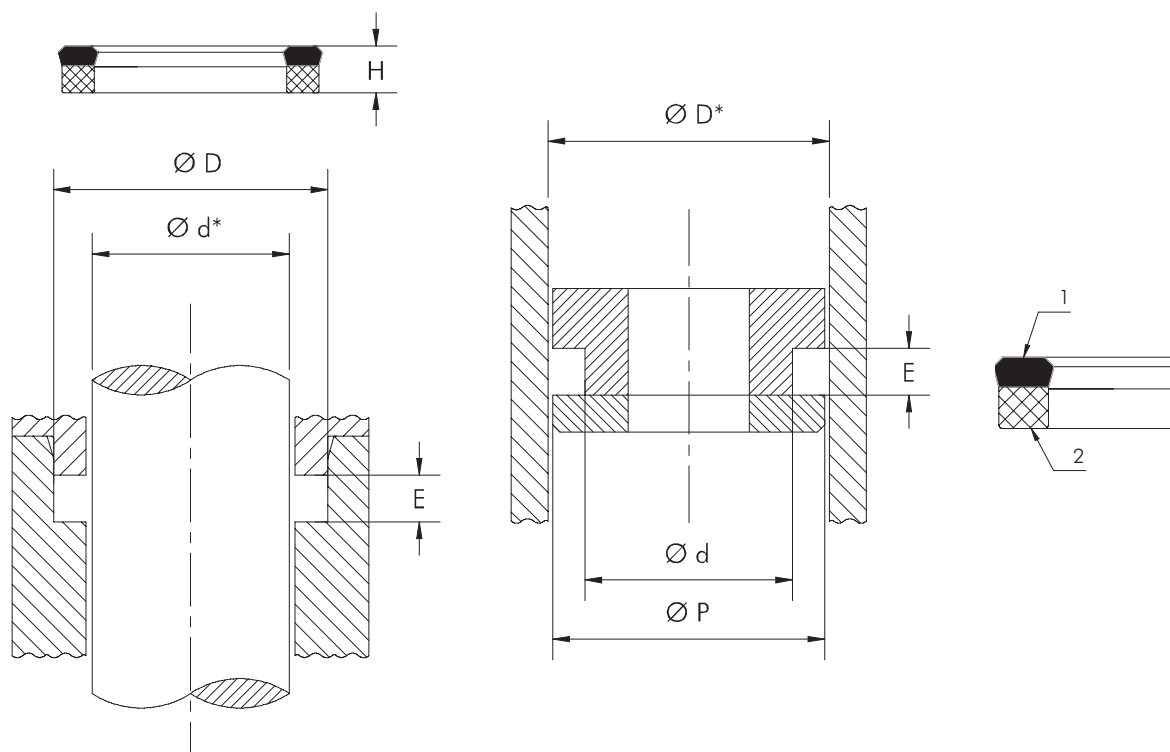
1. Retention element. It surpasses the sealing acting of the common O'rings, because the change shape of the lips produced by the pressure generates a static sealing on the rod walls.
2. Base reinforced with hard fabric and NBR, vulcanized with the retention element forming only one piece. It supports working temperatures up to 130 °C and working pressures up to 250 kg/cm².

ENGLISH

Tabla de Alojamientos y Tolerancias

Tabela de Alojamentos e Tolerâncias / Tolerances and Grooves Chart

Ø D Nominal	D	d	D*	d*	E	P Diámetro del Pistón Diâmetro do Pistão Greatest Tolerance
0 + 100	± 0,08		Diámetro del Vástago Diâmetro do haste Rod Diameter Diámetro del Cilindro Diâmetro do Cilindro Cylinder Diameter		H + 10%	Ø del Cilindro -1 Ø do Cilindro -1 Ø Cylinder -1
101 + 250	± 0,11					
más de 250 mais do 250 more than 250	± 0,15					



Ø d mm	Ø D mm	H mm	Ø d mm	Ø D mm	H mm	Ø d mm	Ø D mm	H mm	Ø d mm	Ø D mm	H mm	Ø d mm	Ø D mm	H mm
12,0	19,0	6,0	33,0	39,6	8,4	45,0	65,0	14,0	65,0	75,0	13,0	90,0	105,0	8,5
15,0	23,0	5,8	34,9	44,0	6,0	48,0	58,0	9,0	65,0	85,0	14,0	90,0	110,0	11,5
18,0	28,0	5,8	35,0	43,0	6,3	50,0	60,0	7,7	66,6	85,7	14,0	100,0	120,0	11,5
19,0	31,0	8,5	35,0	43,0	8,0	50,0	62,0	9,5	69,0	83,0	11,5	100,2	112,7	13,0
20,0	28,5	5,7	35,0	45,0	8,0	50,0	65,0	12,0	69,8	82,5	9,5	100,2	119,7	13,0
22,0	30,0	7,0	35,0	50,0	11,0	50,0	65,0	14,0	70,0	82,5	10,0	101,6	120,6	12,0
23,0	38,0	10,0	35,2	42,0	6,1	50,0	70,0	15,5	70,0	90,0	14,0	107,5	127,0	12,7
24,0	40,0	9,2	36,0	46,0	7,8	50,0	75,0	15,0	70,0	92,0	13,5	110,0	125,0	11,0
25,0	33,0	6,0	36,0	48,0	9,0	53,9	76,2	12,7	70,2	78,2	13,0	110,0	130,0	13,0
25,0	40,0	11,0	40,0	48,0	6,0	55,0	65,0	17,5	75,0	95,0	14,0	114,3	127,0	9,5
25,2	32,7	7,0	40,0	50,0	10,5	55,0	70,0	11,5	76,2	95,0	10,0	115,0	135,0	13,5
28,0	38,0	7,5	40,0	55,0	11,0	55,0	75,0	13,5	80,0	92,0	9,0	125,0	140,0	11,3
30,0	38,0	6,0	40,0	60,0	11,0	57,1	76,2	15,0	80,0	100,0	12,0	130,2	138,2	13,0
30,0	41,5	9,0	40,0	60,0	13,0	57,3	73,0	11,1	80,0	100,0	14,0	166,0	180,0	7,0
30,0	45,0	8,0	44,0	61,0	11,0	60,0	70,0	7,2	85,0	100,0	12,0	171,1	179,5	13,0
32,0	40,0	8,5	45,0	55,0	7,5	60,0	75,0	10,0	85,0	105,0	13,0	177,8	203,2	19,0
32,0	42,0	6,8	45,0	60,0	9,8	60,0	80,0	14,5	90,0	100,0	10,0	210,0	230,0	12,0
32,0	46,0	10,0	45,0	60,0	10,0	63,0	83,0	15,0	90,0	102,0	9,0	270,0	300,0	38,0
32,4	39,6	7,0	45,0	62,5	14,0	63,5	82,5	15,9						