

Guarnición diseñada para el sellado de vástagos y pistones en cilindros neumáticos e hidráulicos de baja presión. La guarnición W-GUG está moldeada en caucho sintético acrílico-nitrilo de excelentes propiedades físicas y químicas, son resistentes a grasas, aceites, fluidos hidráulicos y agentes atmosféricos y permiten presiones de hasta 70 kg/cm² y temperaturas de hasta 130°C.

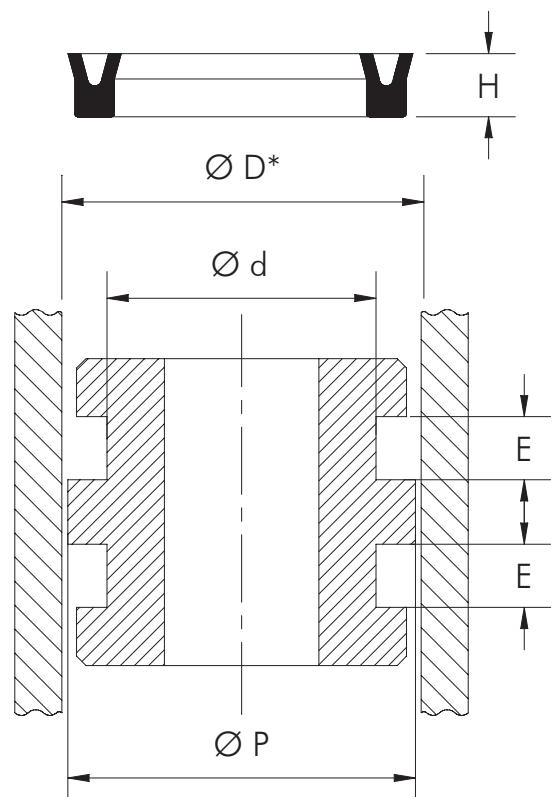
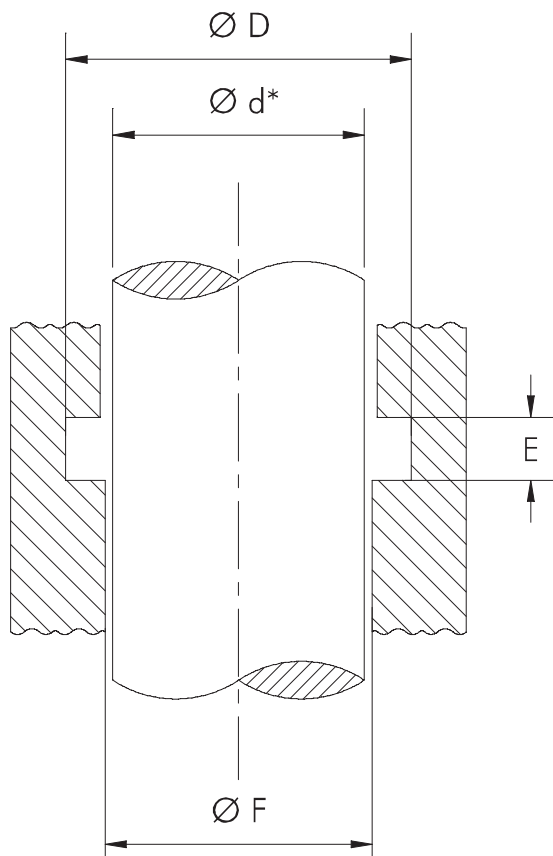
Gaxeta desenvolvida para a vedação de hastes e pistões em cilindros pneumáticos e hidráulico de baixa pressão. A gaxeta W-GUG é fabricada em borracha sintética acrílico-nitrilo de excelentes propriedades físicas e químicas. São resistentes a graxas, óleos, fluidos hidráulicos e agentes atmosféricos. Permitem pressões de até 70 kg/cm² e temperaturas de até 130°C.

It is a seal designed for the sealing of rods and pistons in pneumatic and hydraulic cylinders of low pressure. The W-GUG is molded in nitrile with excellent chemical and physical properties. It is resistant to greases, oils, hydraulic fluids and atmospheric agents. Besides it allows working pressures up to 70 kg/cm² and working temperatures up to 130°C.

Tabla de Alojamientos y Tolerancias

Tabela de Alojamentos e Tolerâncias / Tolerances and Grooves Chart

Ø D Nominal	D	d	D*	d*	E Alojamiento Alojamento Groove	F Tolerancia máx. Tolerância máx. Greatest Tolerance	P Diámetro del Pistón Diâmetro do Pistão Greatest Tolerance
0 + 50	± 0,04		Diámetro del Vástago Diâmetro do haste Rod Diameter Diámetro del Cilindro Diâmetro do Cilindro Cylinder Diameter		H + 10%	d* máx. + 0,2	D* mín. -0,2
51 + 100	± 0,06						
más de 100 mais de 100 more than 100	± 0,08						



Ø d mm	Ø D mm	H mm	Ø d mm	Ø D mm	H mm	Ø d mm	Ø D mm	H mm	Ø d mm	Ø D mm	H mm	Ø d mm	Ø D mm	H mm
4,0	7,4	3,1	15,9	22,0	6,4	26,0	42,0	8,0	42,0	50,0	4,7	69,3	88,9	9,2
4,0	9,0	3,0	16,0	23,8	8,2	26,5	38,0	6,5	42,0	51,0	4,2	70,0	80,0	6,0
4,8	8,0	4,2	16,0	26,0	9,0	27,0	37,8	7,0	43,0	54,1	9,7 *	70,0	90,0	10,7
5,0	9,0	2,6	17,0	31,8	6,0	28,0	37,0	4,0	44,0	64,0	7,5	71,5	82,5	7,0 •
5,0	9,0	2,8	17,5	26,0	5,0 *	28,0	40,0	6,0 •	44,4	57,1	7,9 *	72,0	83,5	8,5 •
5,0	9,5	2,6	17,5	26,8	5,4	28,0	47,0	10,5	44,4	57,1	9,2	72,0	84,0	9,5 •
5,0	9,7	3,4	18,0	24,0	5,0	28,5	37,5	7,0	44,6	62,5	13,5	75,0	95,0	10,4
6,0	12,3	3,0 •	19,1	32,3	8,0	28,5	38,0	7,0	45,0	55,0	6,5	75,0	100,0	11,0
6,3	11,0	4,3	19,2	24,0	2,4	29,5	44,5	9,0	47,2	61,4	7,5 •	76,0	94,0	11,5
6,3	11,3	4,0 •	20,0	26,5	4,0	30,0	38,0	5,4	47,6	62,7	8,0	76,2	88,9	7,9
6,5	10,5	3,2	20,0	27,0	5,3 *	30,0	40,0	9,0	48,0	68,0	8,0	77,0	89,0	9,5
6,6	12,0	3,3	20,0	28,0	5,7 •	30,0	42,0	15,0	50,0	60,0	7,0	80,0	90,5	8,5 *
6,8	12,5	6,0 •	20,0	30,0	6,3 •	30,0	50,0	6,3	50,0	60,0	7,4 *	80,0	100,0	15,0
7,0	11,7	2,8	20,0	30,0	6,5 *	31,7	38,1	4,7	50,0	62,0	8,7	82,0	98,4	13,0
7,0	14,0	5,3	20,0	34,2	8,0	31,7	44,4	6,3 *	50,0	63,0	6,0	83,0	100,0	13,5
7,0	15,0	4,0	22,0	28,0	4,2	31,8	38,0	6,2	50,0	63,0	9,0	83,0	101,0	13,0
8,0	13,5	3,2	22,0	30,0	4,0	31,9	39,2	7,8	50,0	64,0	10,4	85,0	101,0	13,0
8,5	13,2	3,3	22,0	30,0	7,0	34,0	44,0	9,2	50,0	70,0	8,0	85,7	98,2	9,8
9,0	12,0	2,5	22,0	32,0	6,3	34,0	50,0	6,3	50,0	70,0	10,0	87,0	101,6	8,0
9,0	13,0	3,3	22,0	42,0	10,0	34,1	40,0	5,0	50,0	73,0	12,0*	88,0	100,0	8,5 •
9,0	15,0	8,9	22,2	28,5	2,5	34,4	43,2	6,8 •	52,0	61,0	7,0	88,9	101,6	8,2
9,5	16,5	4,0 *	22,2	28,5	3,3	34,9	44,4	6,6 •	52,0	62,0	7,0 •	88,9	114,3	9,5
10,0	13,5	2,3	22,2	31,7	4,7 *	34,9	44,4	6,6 *	52,0	64,0	8,5	89,2	116,5	16,5
10,0	15,5	2,3	22,5	28,7	5,6	34,9	44,4	7,9 *	54,0	70,0	8,2 •	90,0	100,0	6,5
10,0	18,0	4,0	22,5	37,5	9,0	34,9	50,8	7,9 *	54,0	74,0	10,0	90,0	105,0	11,5
11,1	17,4	3,2	23,0	31,2	6,0	35,0	43,0	7,4 *	54,8	73,5	10,2	90,0	110,0	15,0*
12,0	18,0	10,6	23,0	31,5	9,0	35,0	51,0	8,0 *	55,0	75,0	10,0	92,5	124,0	14,0
12,0	25,0	6,5	23,0	33,0	5,4	35,0	52,0	9,0	56,0	62,0	6,5	94,0	114,0	12,5
12,2	18,0	11,0	23,4	28,6	4,2	36,0	51,0	9,0	56,0	75,0	9,4	94,5	110,0	10,0
12,7	19,0	3,5	23,5	31,7	5,8 *	36,0	54,9	9,0	56,0	76,2	8,9	95,0	108,0	9,0
12,7	22,2	5,0	23,8	35,0	6,9	37,0	50,0	9,5	57,1	76,2	11,5	95,0	114,0	14,0
13,0	18,0	5,0	23,8	42,9	8,5	37,7	46,0	8,0	60,0	80,0	10,0	95,0	115,0	10,0
13,5	20,0	3,5 •	25,0	33,0	5,7	38,0	50,0	6,0	60,0	85,0	15,0	98,0	123,4	12,7
14,0	25,5	6,0	25,0	36,0	7,0	38,0	50,0	6,3	60,7	48,5	6,0	98,5	117,5	12,0
14,0	26,0	5,0	25,0	37,0	5,0	39,5	50,0	7,0 •	62,0	69,0	5,0	100,0	115,0	9,0
14,3	24,2	4,0	25,0	38,0	6,5	40,0	50,0	6,5 *	62,3	80,0	8,0	100,0	119,0	12,0
15,0	22,0	4,1	25,0	40,0	8,0	40,0	52,0	6,0	63,5	76,2	6,3	100,0	125,0	14,5
15,0	22,3	5,3 *	25,0	42,0	8,0	40,0	55,0	12,0	65,0	85,0	10,0	100,0	127,0	16,0
15,0	29,0	9,5	25,0	50,0	12,0	40,0	56,0	9,5 *	66,0	85,0	9,5	102,0	122,0	19,0
15,0	30,0	10,0	25,8	41,5	8,0	40,0	60,0	10,0	67,0	78,0	7,5 •	105,0	122,0	15,0
15,0	35,0	10,0	25,9	32,8	4,0	41,0	52,0	14,3	68,0	76,2	6,5	105,0	127,0	16,5
15,4	20,6	2,2	25,9	37,8	6,5	41,3	50,8	4,8	68,0	80,0	9,0	105,3	123,5	9,0
15,5	20,7	2,5	26,0	36,0	12,0•	41,3	50,8	5,5 *	69,0	80,5	5,7	106,0	133,3	13,0
15,8	21,5	6,0	26,0	39,0	6,4	41,5	51,0	7,1 •	69,0	84,0	11,8	106,5	119,0	9,5

Ø d mm	Ø D mm	H mm	Ø d mm	Ø D mm	H mm	Ø d mm	Ø D mm	H mm	Ø d mm	Ø D mm	H mm	Ø d mm	Ø D mm	H mm
107,0	122,0	11,0•	123,0	135,4	9,5•	148,0	160,0	11,0	183,0	200,0	22,0	268,0	292,0	12,0
107,0	122,0	11,2	123,9	139,7	9,0	149,5	165,5	12,0	187,3	203,0	9,5	270,0	300,0	15,0
109,0	125,0	12,0	127,0	150,0	12,0	152,0	171,0	12,2	194,5	215,0	8,2•	273,0	304,8	19,0
110,0	124,0	7,0	127,0	152,4	12,7	154,0	185,0	13,0	200,0	229,0	14,5	274,8	303,5	20,0
110,0	125,0	10,5•	128,8	138,5	7,0	160,0	175,5	6,0	209,5	228,6	12,7	285,0	305,0	10,0
110,0	127,0	16,0	130,0	142,5	7,6	160,0	190,0	15,0	215,0	241,0	15,0	287,0	317,0	25,0
113,0	146,2	13,5	130,0	146,0	9,0•	162,0	191,0	16,0	217,0	253,0	19,0	292,1	317,5	12,7
114,0	126,0	6,5	131,0	150,0	9,0	166,0	176,0	7,0	218,0	254,0	18,0	302,0	317,0	6,5
114,3	127,0	6,3	132,0	152,0	11,0	167,0	190,0	12,0	218,0	254,0	18,5	324,0	348,0	12,0
115,0	125,0	12,5	134,5	150,0	8,0	167,0	194,0	17,0	222,0	256,0	15,0	331,0	353,0	14,0
115,0	130,4	8,0	136,0	161,0	16,0	169,0	205,0	19,0	222,2	254,0	19,0	366,4	406,4	19,0
115,0	139,7	9,8•	139,2	152,0	7,8	170,0	203,0	19,0	227,0	253,0	12,7	460,0	510,0	24,0
117,0	130,5	9,5	140,0	155,0	9,5	173,0	203,0	18,0	228,6	254,0	12,7	519,9	558,8	19,5
120,0	140,0	15,0	142,0	165,0	16,0	175,0	200,0	21,0	236,0	261,0	19,0	763,0	800,0	27,5•
120,5	133,2	10,0	145,6	175,0	17,8	180,0	200,0	12,0	265,0	284,0	8,0	800,0	837,0	27,5

* vástago / haste / rod
• pistón / pistõe / piston

W-PACKING / W-PACKING / W-PACKING

Código N° Code N°	Ød mm	ØD mm	H mm	Código N° Code N°	Ød mm	ØD mm	H mm	Código N° Code N°	Ød mm	ØD mm	H mm
85040037	9,52	15,87	3,17	85050137	34,92	42,85	3,96	85070300	76,20	87,31	5,55
85040050	12,70	19,05	3,17	85060150	38,10	47,62	4,76	85070306	77,78	88,90	5,55
85040062	15,87	22,22	3,17	85060162	41,27	50,80	4,76	85080350	88,90	101,60	6,35
85040075	19,05	25,40	3,17	85060175	44,45	53,97	4,76	85080400	101,60	114,30	6,35
85040100	25,40	31,75	3,17	85060200	50,80	60,32	4,76	85090443	112,71	127,00	7,14
85050093	23,81	31,75	3,96	85060212	53,97	63,50	4,76	85090500	127,00	141,28	7,14
85050100	25,40	33,33	3,96	85060250	63,50	73,02	4,76	85100537	136,52	152,40	7,93
85050118	30,16	38,10	3,96	85070256	65,08	76,20	5,55	85100737	187,32	203,20	7,93
85050125	31,75	39,68	3,96	85070281	71,43	82,55	5,55	85110931	236,53	254,00	8,73