



Se utilizan para expulsar las partículas extrañas en los vástagos de cilindros hidráulicos y neumáticos, particularmente cuando éstos están expuestos en el exterior, en lugares altamente contaminados y en medios abrasivos. Diseñados para clavar en su alojamiento, están fabricados en caucho sintético acrílico-nitrilo y soportan temperaturas de 130°C.

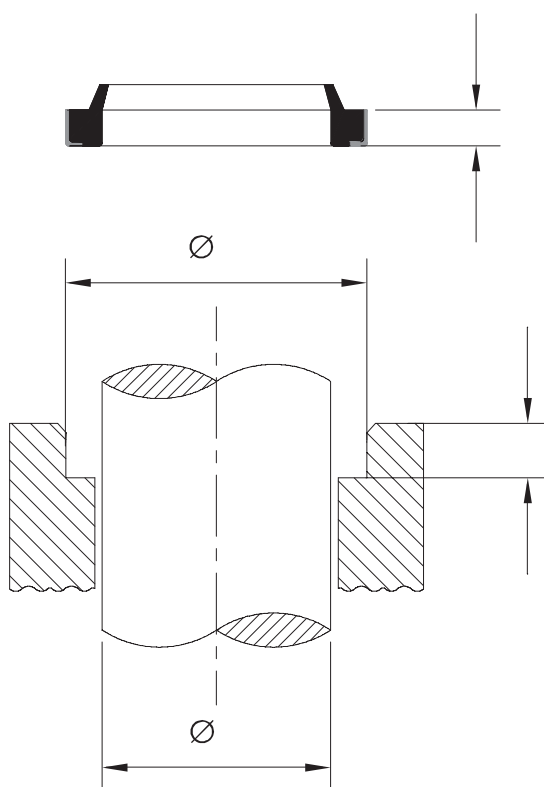
Se utilizam para expelir as partículas estranhas das hastes de cilindros hidráulicos e pneumáticos, particularmente quando estas estão expostas ao ar livre, em lugares altamente contaminados e em meios abrasivos. Desenvolvidas para se fixar em seu alojamento, são fabricadas em borracha sintética acrílico-nitrilo e suportam temperaturas de 130°C.

This product is Used to eject strange particles in the hydraulic and pneumatic cylinder of the rods when they are exposed in outdoors, places highly polluted or abrasive environments. Designed to nail in their groove. They are made of NBR and support working temperatures up to 130 °C.

ESPAÑOL

PORTUGUES

ENGLISH



Ø d mm	Ø D mm	H mm	Ø d mm	Ø D mm	H mm	Ø d mm	Ø D mm	H mm	Ø d mm	Ø D mm	H mm
6,3	14,2	4,0	35,0	45,0	6,0	55,0	63,0	7,0	80,0	90,0	10,0
10,0	17,4	4,0	35,0	45,0	7,0	55,5	63,5	4,8	85,0	95,0	7,0
12,0	20,0	4,0	40,0	50,0	6,0	60,0	70,0	7,0	85,0	95,3	7,0
14,0	25,0	5,0	40,0	50,0	7,0	63,0	75,0	7,0	85,0	100,0	10,0
15,0	25,0	5,0	45,0	55,0	7,0	65,0	75,3	7,0	90,0	100,0	7,0
18,0	28,0	7,0	48,0	60,0	7,0	70,0	80,3	7,0	100,0	110,0	10,0
22,0	28,0	5,0	50,0	60,0	7,0	75,0	83,0	6,5	105,0	115,0	7,0
23,0	33,4	3,5	50,0	63,0	5,0	75,0	85,0	7,0	110,0	120,0	7,0
25,0	35,0	7,0	52,0	62,3	7,0	75,0	89,0	8,0	130,0	145,0	9,0
32,0	45,0	7,0									